

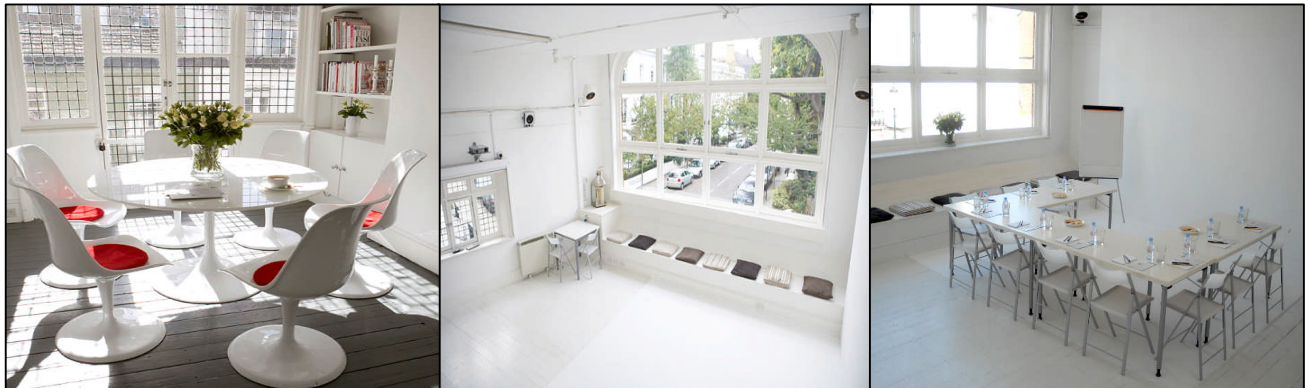
32 Stratford Road London W8 6QF

870 ft² - 2610 ft²
80.80 m² - 242.45 m²

2ND FLOOR – UNDER OFFER

TO LET

Offices/Studios



Location

The property is conveniently situated to the south of Kensington High Street at the end of Allen Street on the corner of Stratford Road and Radley Mews. Kensington High Street station with its underground (District & Circle lines) is 6 minutes walk away and allows access to both Kensington Gardens and Hyde Park. Access west out of London is via the A40 (M) and A4 with the West End within easy reach via Earl's court road to the West.

Description

32 Stratford road occupy's three floors of an imposing Victorian property currently used as artist's studio/offices and offers excellent natural light. The entrance is located discreetly off the North side of Radley Mews. The offices all have a North facing open plan studio rooms with large windows. To the rear of the floors there are smaller more functional offices which also benefit from high ceilings and excellent natural light. The property is offered on a floor by floor basis. The Ground 1st and 2nd floors are accessed by an original tiled spiral staircase.

Floors

Ground Floor	870 sq ft
1 st floor	870 sq ft
2 nd floor	870 sq ft – UNDER OFFER
Total	2,610 sq ft

Amenities

- Excellent natural light
- Painted Wood flooring
- Kitchenette / WC facilities
- New lighting

Terms

Available on a new sub lease on flexible terms to be agreed

Rent

£37.50 psf (£32,625 - 97,875 per annum) exclusive

Rates

£8.56 psf

Service Charge

To be confirmed

Viewing

Frost Meadowcroft - 020 7938 2341

CBRE – 0207 182 2439

Rupert Searle rsearle@frostmeadowcroft.com **James Nicholson** james.nicholson@cbre.com

Details of other properties, location plans and additional photos can be found on our website frostmeadowcroft.com